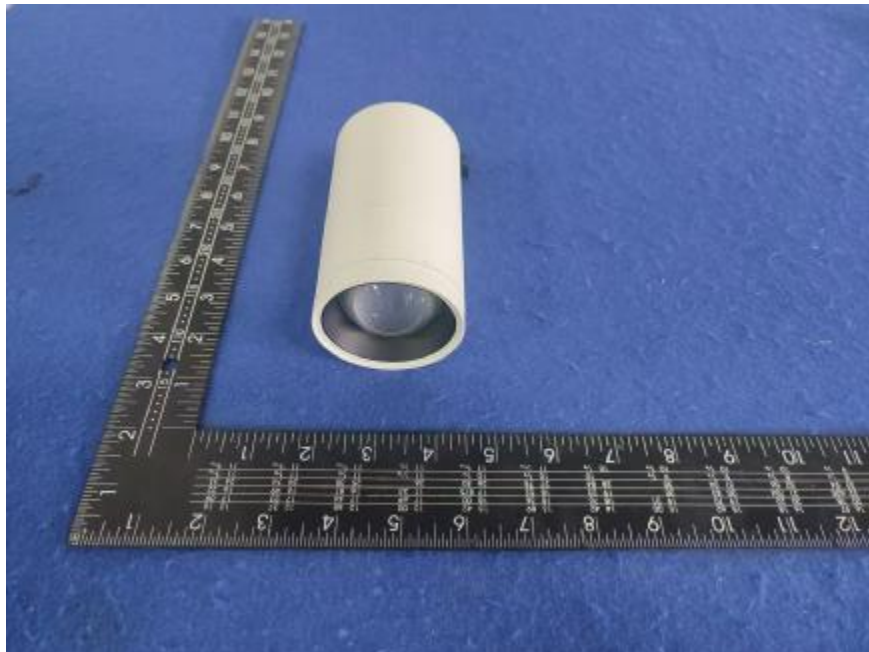


Luminaire Photograph



Light Output Ratio:	58.8%	
Luminaire Power:	14.55 W	
SHR Nominal:	0.75	Calculated using the TM5
SHR Maximum:	0.80	fine grid method.

C Range: 0 - 360DEG
C Interval: 30.0DEG
Test Speed: HIGH
Temperature: 25.3 °C
Operators: zoe
Test Date: 2025-1-10

Range: 0 - 180DEG
Interval: 1.0DEG
Test System: EVERFINE GO-SPEX500_V1 SYSTEM V2.00.461
Humidity: 65.0%
Test Distance: 3.160m [K=1.0000]
Remarks: LAMP: BXRE-30H1000-A-83 Ra: 95
LENS: PM-1100 55R
NOT DRIVER: 48V
30minutes warm-up

LUMINOUS INTENSITY DISTRIBUTION DIAGRAM

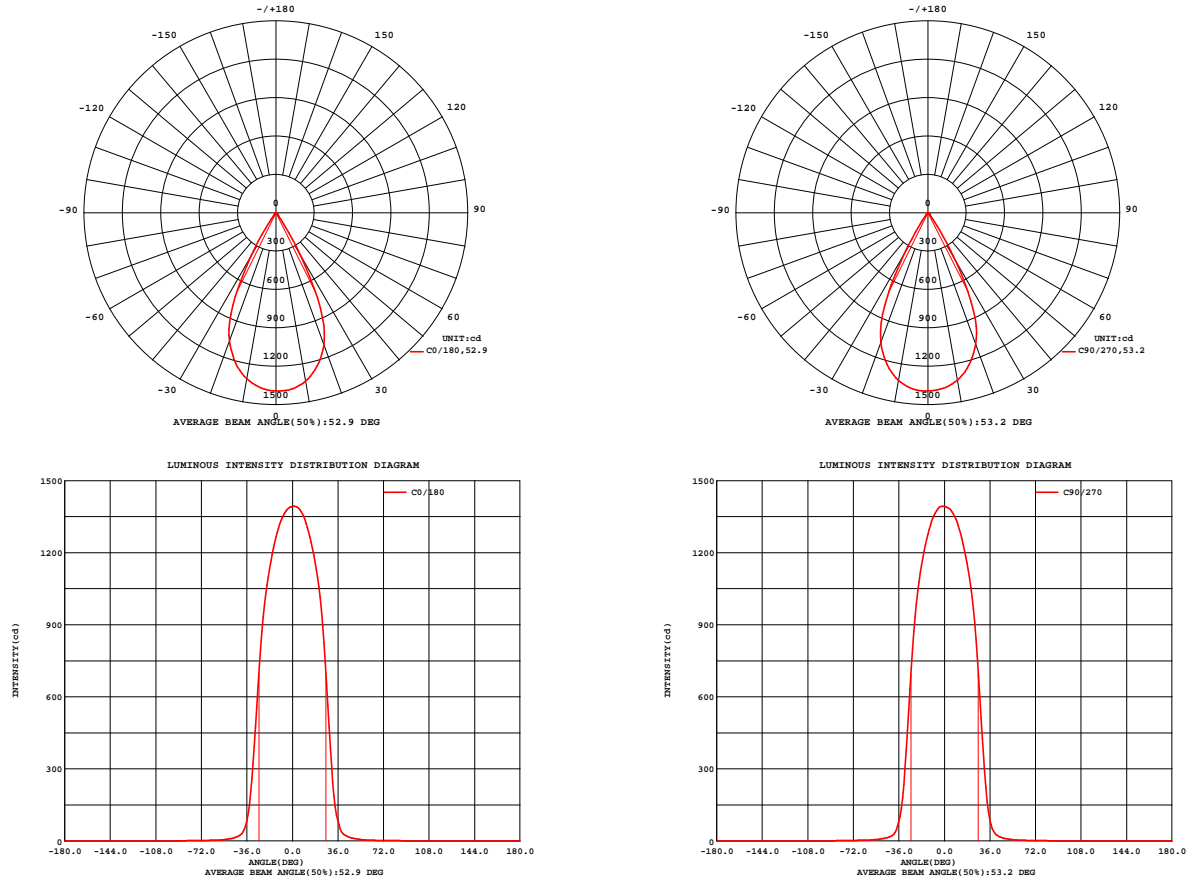


Fig. C0/C180

Fig. C90/C270

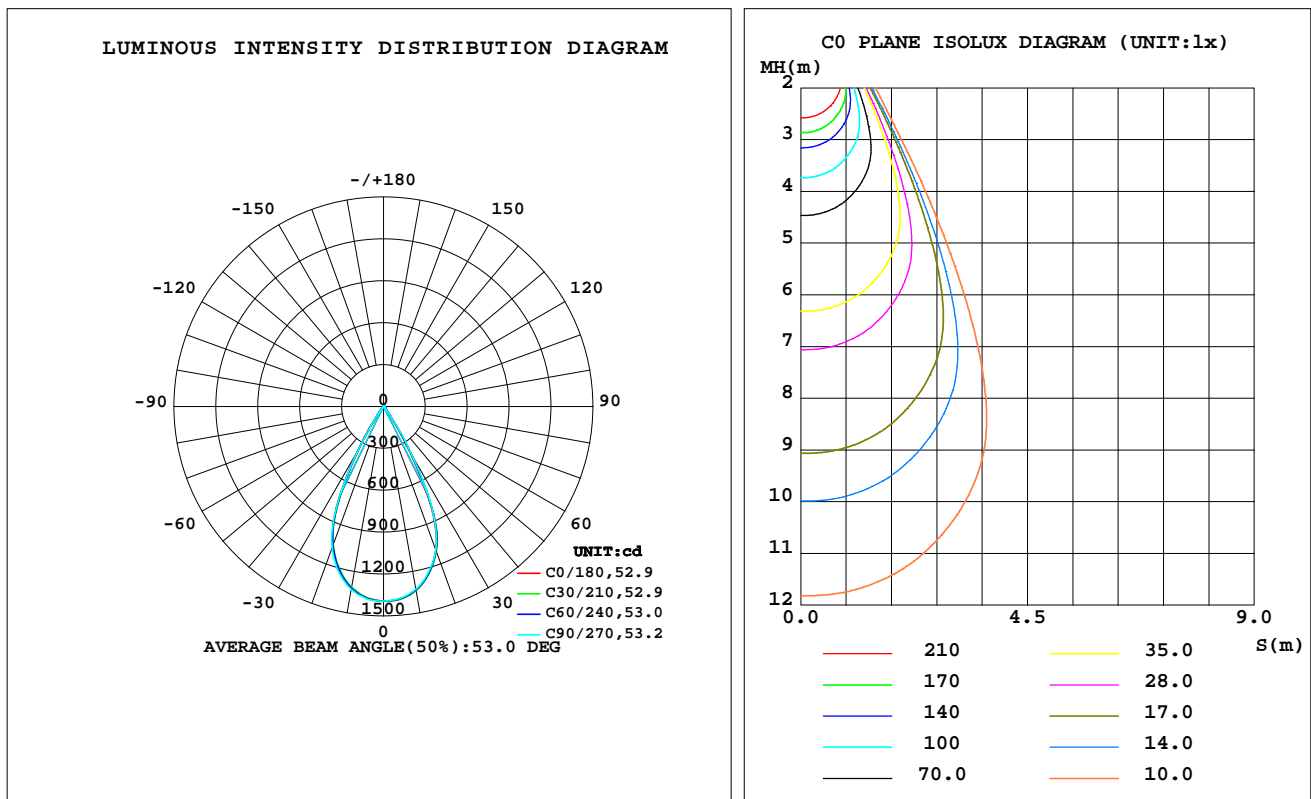
C Range: 0 - 360DEG
C Interval: 30.0DEG
Test Speed: HIGH
Temperature: 25.3 °C
Operators: zoe
Test Date: 2025-1-10

Range: 0 - 180DEG
Interval: 1.0DEG
Test System: EVERFINE GO-SPEX500_V1 SYSTEM V2.00.461
Humidity: 65.0%
Test Distance: 3.160m [K=1.0000]
Remarks: LAMP: BXRE-30H1000-A-83 Ra: 95
LENS: PM-1100 55R
NOT DRIVER: 48V
30minutes warm-up

LUMINAIRE PHOTOMETRIC TEST REPORT

Test:U:47.997V I:0.3032A P:14.553W PF:1.0000 Freq:0Hz Lamp Flux:1597.41x1 lm		
NAME: OZ48-SBZ-64	TYPE:	WEIGHT:
SPEC.: 3000K	DIM.:	SERIAL No.: 2501100051
MFR.: RISE	SUR.: 0.00246176m2	Shielding Angle:

DATA OF LAMP		PHOTOMETRIC DATA Eff: 64.58 lm/W			
MODEL	Brideglux	Imax(cd)	1395	S/MH(C0/180)	0.77
NOMINAL POWER(W)	15	LOR(%)	58.8	S/MH(C90/270)	0.76
RATED VOLTAGE(V)	48	TOTAL FLUX(lm)	939.87	UP,DN(C0-180)	0.0,29.8
NOMINAL FLUX(lm)	1597.41	CIE CLASS	DIRECT	UP,DN(C180-360)	0.0,29.1
LAMPS INSIDE	1	up(%)	0.0	CIBSE SHR NOM	0.75
TEST VOLTAGE(V)	48	down(%)	58.8	CIBSE SHR MAX	0.80



C Range: 0 - 360DEG
C Interval: 30.0DEG
Test Speed: HIGH
Temperature:25.3℃
Operators:zoe
Test Date:2025-1-10

Range: 0 - 180DEG
Interval: 1.0DEG
Test System:EVERFINE GO-SPEX500_V1 SYSTEM V2.00.461
Humidity:65.0%
Test Distance:3.160m [K=1.0000]
Remarks: LAMP:BXRE-30H1000-A-83 Ra:95
LENS:PM-1100 55R
NOT DRIVER:48V
30minutes warm-up

ZONAL FLUX DIAGRAM

ZONAL FLUX DIAGRAM:

	C0	C45	C90	C135	C180	C225	C270	C315		zone	total	%lum,lamp
10	1337	1336	1328	1320	1316	1318	1330	1340	0- 10	130.1	130.1	13.8,8.14
20	1096	1103	1093	1072	1065	1057	1078	1099	10- 20	343.0	473.0	50.3,29.6
30	389.3	419.2	426.4	406.0	392.1	371.0	376.3	394.5	20- 30	355.0	828.0	88.1,51.8
40	31.28	32.87	32.07	30.72	30.34	28.86	27.91	28.16	30- 40	88.66	916.7	97.5,57.4
50	9.370	9.486	8.411	8.832	8.666	8.722	8.632	8.474	40- 50	12.37	929.0	98.8,58.2
60	3.485	3.491	3.322	3.553	3.395	3.458	3.671	3.455	50- 60	5.015	934.1	99.4,58.5
70	2.270	2.223	2.135	2.288	2.233	2.345	2.528	2.303	60- 70	2.774	936.8	99.7,58.6
80	1.523	1.440	1.390	1.414	1.476	1.546	1.588	1.567	70- 80	1.934	938.8	99.9,58.8
90	0	0	0	0	0	0	0	0	80- 90	1.095	939.9	100,58.8
100	0	0	0	0	0	0	0	0	90-100	0	939.9	100,58.8
110	0	0	0	0	0	0	0	0	100-110	0	939.9	100,58.8
120	0	0	0	0	0	0	0	0	110-120	0	939.9	100,58.8
130	0	0	0	0	0	0	0	0	120-130	0	939.9	100,58.8
140	0	0	0	0	0	0	0	0	130-140	0	939.9	100,58.8
150	0	0	0	0	0	0	0	0	140-150	0	939.9	100,58.8
160	0	0	0	0	0	0	0	0	150-160	0	939.9	100,58.8
170	0	0	0	0	0	0	0	0	160-170	0	939.9	100,58.8
180	0	0	0	0	0	0	0	0	170-180	0	939.9	100,58.8
DEG	LUMINOUS INTENSITY:cd									UNIT:lm		

C Range: 0 - 360DEG
C Interval: 30.0DEG
Test Speed: HIGH
Temperature:25.3℃
Operators:zoe
Test Date:2025-1-10

Range: 0 - 180DEG
Interval: 1.0DEG
Test System:EVERFINE GO-SPEX500_V1 SYSTEM V2.00.461
Humidity:65.0%
Test Distance:3.160m [K=1.0000]
Remarks: LAMP:BXRE-30H1000-A-83 Ra:95
LENS:PM-1100 55R
NOT DRIVER:48V
30minutes warm-up

LUMINANCE LIMITATION CURVES

Test:U:47.997V I:0.3032A P:14.553W PF:1.0000 Freq:0Hz
Lamp Flux:1597.4lx1 lm

NAME: OZ48-SBZ-64

TYPE:

WEIGHT:

SPEC.: 3000K

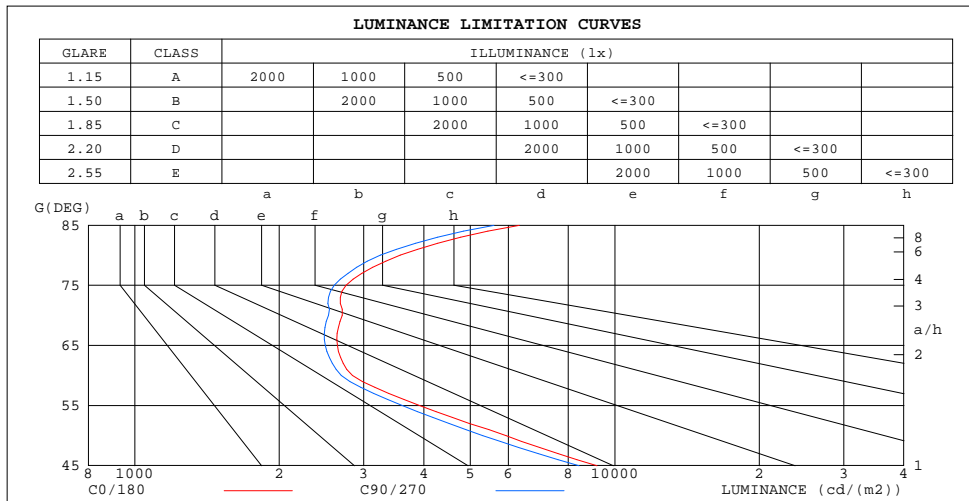
DIM.:

SERIAL No.: 2501100051

MFR.: RISE

SUR.: 0.00246176m2

Shielding Angle:



LUMINANCE cd/(m2)		
G(DEG)	C0/180	C90/270
85	6320	5602
80	3573	3246
75	2755	2604
70	2704	2531
65	2643	2493
60	2840	2694
55	3920	3609
50	5938	5307
45	9178	8426

C Range: 0 - 360DEG
C Interval: 30.0DEG
Test Speed: HIGH
Temperature:25.3℃
Operators:zoe
Test Date:2025-1-10

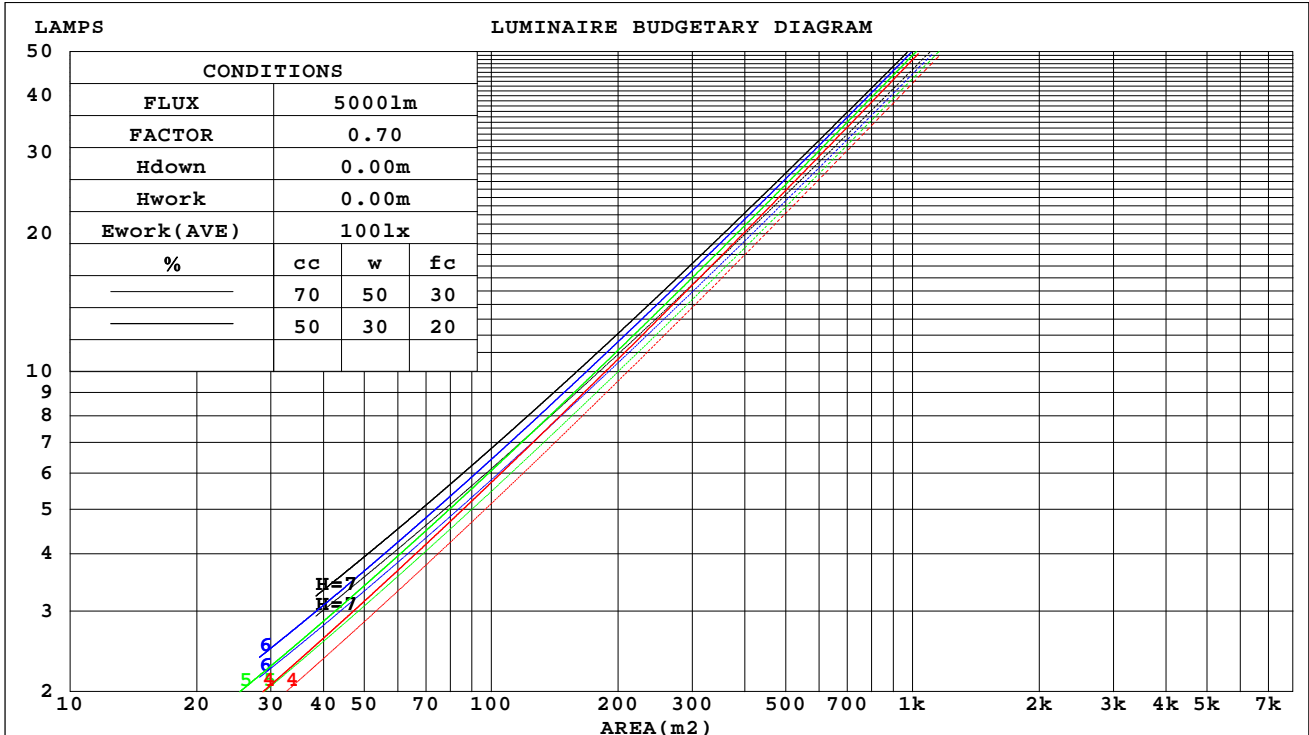
Range: 0 - 180DEG
Interval: 1.0DEG
Test System:EVERFINE GO-SPEX500_V1 SYSTEM V2.00.461
Humidity:65.0%
Test Distance:3.160m [K=1.0000]
Remarks: LAMP:BXRE-30H1000-A-83 Ra:95
LENS:PM-1100 55R
NOT DRIVER:48V
30minutes warm-up

CU AND LUMINAIRE BUDGETARY ESTIMATE DIAGRAM

Test:U:47.997V I:0.3032A P:14.553W PF:1.0000 Freq:0Hz
Lamp Flux:1597.41x1 lm

NAME: OZ48-SBZ-64	TYPE:	WEIGHT:
SPEC.: 3000K	DIM.:	SERIAL No.: 2501100051
MFR.: RISE	SUR.: 0.00246176m2	Shielding Angle:

cc	80%			70%			50%			30%			10%			0
w	50%	30%	10%	50%	30%	10%	50%	30%	10%	50%	30%	10%	50%	30%	10%	0
fc	20%			20%			20%			20%			20%			0
RCR	RCR:Room Cavity Ratio															



C Range: 0 - 360DEG
C Interval: 30.0DEG
Test Speed: HIGH
Temperature:25.3℃
Operators:zoe
Test Date:2025-1-10

Range: 0 - 180DEG
Interval: 1.0DEG
Test System:EVERFINE GO-SPEX500_V1 SYSTEM V2.00.461
Humidity:65.0%
Test Distance:3.160m [K=1.0000]
Remarks: LAMP:BXRE-30H1000-A-83 Ra:95
LENS:PM-1100 55R
NOT DRIVER:48V
30minutes warm-up

WEC AND CCEC

Test:U:47.997V I:0.3032A P:14.553W PF:1.0000 Freq:0Hz Lamp Flux:1597.4lx1 lm		
NAME: OZ48-SBZ-64	TYPE:	WEIGHT:
SPEC.: 3000K	DIM.:	SERIAL No.: 2501100051
MFR.: RISE	SUR.: 0.00246176m2	Shielding Angle:

cc	80%			70%			50%			30%			10%			0
w	50%	30%	10%	50%	30%	10%	50%	30%	10%	50%	30%	10%	50%	30%	10%	0
fc	20%			20%			20%			20%			20%			0
RCR	RCR:Room Cavity Ratio						Wall Exitance Coefficients(WEC)									
0.0																
1.0	.097	.055	.017	.093	.053	.017	.085	.049	.016	.079	.045	.015	.072	.042	.014	
2.0	.091	.050	.015	.088	.048	.015	.082	.045	.014	.076	.043	.013	.071	.040	.013	
3.0	.086	.046	.014	.083	.045	.013	.078	.042	.013	.073	.040	.012	.069	.038	.012	
4.0	.082	.042	.012	.079	.042	.012	.075	.040	.012	.071	.038	.011	.067	.036	.011	
5.0	.078	.040	.011	.076	.039	.011	.072	.037	.011	.068	.036	.011	.065	.035	.010	
6.0	.074	.037	.011	.072	.037	.011	.069	.035	.010	.066	.034	.010	.063	.033	.010	
7.0	.071	.035	.010	.069	.035	.010	.066	.034	.010	.064	.033	.009	.061	.032	.009	
8.0	.068	.033	.009	.067	.033	.009	.064	.032	.009	.061	.031	.009	.059	.030	.009	
9.0	.065	.032	.009	.064	.031	.009	.062	.031	.009	.059	.030	.009	.057	.029	.008	
10.0	.063	.030	.008	.062	.030	.008	.060	.029	.008	.058	.029	.008	.056	.028	.008	

cc	80%			70%			50%			30%			10%			0
w	50%	30%	10%	50%	30%	10%	50%	30%	10%	50%	30%	10%	50%	30%	10%	0
fc	20%			20%			20%			20%			20%			0
RCR	RCR:Room Cavity Ratio						Ceiling Cavity Exitance Coefficients(CCEC)									
0.0	.112	.112	.112	.096	.096	.096	.065	.065	.065	.038	.038	.038	.012	.012	.012	
1.0	.100	.093	.086	.086	.079	.074	.059	.055	.051	.034	.032	.030	.011	.010	.010	
2.0	.091	.078	.067	.078	.067	.058	.053	.046	.041	.031	.027	.024	.010	.009	.008	
3.0	.083	.067	.054	.071	.058	.047	.049	.040	.033	.028	.023	.019	.009	.008	.006	
4.0	.076	.058	.044	.065	.050	.038	.045	.035	.027	.026	.020	.016	.008	.007	.005	
5.0	.071	.051	.036	.061	.044	.032	.042	.031	.022	.024	.018	.013	.008	.006	.004	
6.0	.066	.045	.030	.057	.039	.027	.039	.028	.019	.023	.016	.011	.007	.005	.004	
7.0	.062	.041	.026	.054	.035	.022	.037	.025	.016	.022	.015	.009	.007	.005	.003	
8.0	.059	.037	.022	.051	.032	.019	.035	.023	.014	.020	.013	.008	.007	.004	.003	
9.0	.056	.034	.019	.048	.029	.017	.033	.021	.012	.019	.012	.007	.006	.004	.002	
10.0	.053	.031	.017	.046	.027	.015	.032	.019	.010	.019	.011	.006	.006	.004	.002	

C Range: 0 - 360DEG
C Interval: 30.0DEG
Test Speed: HIGH
Temperature:25.3℃
Operators:zoe
Test Date:2025-1-10

Range: 0 - 180DEG
Interval: 1.0DEG
Test System:EVERFINE GO-SPEX500_V1 SYSTEM V2.00.461
Humidity:65.0%
Test Distance:3.160m [K=1.0000]
Remarks: LAMP:BXRE-30H1000-A-83 Ra:95
LENS:PM-1100 55R
NOT DRIVER:48V
30minutes warm-up

UGR(Unified Glare Rating) Table

Test:U:47.997V I:0.3032A P:14.553W PF:1.0000 Freq:0Hz Lamp Flux:1597.4lx1 lm										
NAME: OZ48-SBZ-64					TYPE:			WEIGHT:		
SPEC.: 3000K					DIM.:			SERIAL No.: 2501100051		
MFR.: RISE					SUR.: 0.00246176m2			Shielding Angle:		
ceiling/cavity	0.7	0.7	0.5	0.5	0.3	0.7	0.7	0.5	0.5	0.3
walls	0.5	0.3	0.5	0.3	0.3	0.5	0.3	0.5	0.3	0.3
working plane	0.2	0.2	0.2	0.2	0.2	0.2	0.2	0.2	0.2	0.2
Room dimensions	Viewed crosswise					Viewed endwise				
x = 2H y = 2H	13.9	14.7	14.1	14.9	15.0	14.3	15.2	14.6	15.4	15.5
3H	13.8	14.6	14.0	14.7	14.9	14.2	15.0	14.5	15.2	15.4
4H	13.7	14.5	14.0	14.7	14.9	14.2	14.9	14.5	15.2	15.4
6H	13.7	14.4	14.0	14.7	14.9	14.2	14.9	14.5	15.1	15.4
8H	13.8	14.4	14.1	14.7	14.9	14.2	14.8	14.5	15.1	15.4
12H	13.8	14.4	14.1	14.7	15.0	14.2	14.8	14.5	15.1	15.4
4H 2H	13.6	14.4	13.9	14.6	14.8	14.1	14.9	14.4	15.1	15.3
3H	13.6	14.2	13.9	14.5	14.8	14.1	14.7	14.4	15.0	15.2
4H	13.6	14.2	13.9	14.5	14.8	14.0	14.6	14.4	14.9	15.2
6H	13.6	14.1	14.0	14.5	14.8	14.0	14.5	14.4	14.9	15.2
8H	13.7	14.2	14.1	14.5	14.9	14.1	14.5	14.5	14.9	15.3
12H	13.8	14.2	14.2	14.6	15.0	14.1	14.6	14.5	14.9	15.3
8H 4H	13.5	14.0	13.9	14.3	14.7	13.9	14.4	14.3	14.8	15.1
6H	13.6	14.0	14.0	14.4	14.8	14.0	14.4	14.4	14.8	15.2
8H	13.7	14.0	14.1	14.5	14.9	14.1	14.4	14.5	14.8	15.3
12H	13.9	14.2	14.4	14.7	15.1	14.2	14.5	14.7	14.9	15.4
12H 4H	13.5	13.9	13.9	14.3	14.6	13.9	14.3	14.3	14.7	15.1
6H	13.6	13.9	14.0	14.3	14.8	14.0	14.3	14.4	14.7	15.2
8H	13.7	14.0	14.2	14.5	14.9	14.1	14.4	14.5	14.8	15.3
Variations with the observer position at spacings(CIE Pub.117):										
S = 1.0H	+ 2.8 / - 2.5					+ 2.9 / - 2.7				
1.5H	+ 4.7 / - 2.2					+ 4.9 / - 2.3				
2.0H	+ 1.9 / - 0.9					+ 1.8 / - 0.8				

CIE Pub.117, 1597 lm Total Lamp Luminous Flux Correct (8log(F/F0) = 1.6)
Area: 0.00246176 m2

C Range: 0 - 360DEG
C Interval: 30.0DEG
Test Speed: HIGH
Temperature:25.3℃
Operators:zoe
Test Date:2025-1-10

Range: 0 - 180DEG
Interval: 1.0DEG
Test System:EVERFINE GO-SPEX500_V1 SYSTEM V2.00.461
Humidity:65.0%
Test Distance:3.160m [K=1.0000]
Remarks: LAMP:BXRE-30H1000-A-83 Ra:95
LENS:PM-1100 55R
NOT DRIVER:48V
30minutes warm-up

UTILIZATION FACTORS TABLE

Test:U:47.997V I:0.3032A P:14.553W PF:1.0000 Freq:0Hz Lamp Flux:1597.4lx1 lm		
NAME: OZ48-SBZ-64	TYPE:	WEIGHT:
SPEC.: 3000K	DIM.:	SERIAL No.: 2501100051
MFR.: RISE	SUR.: 0.00246176m2	Shielding Angle:

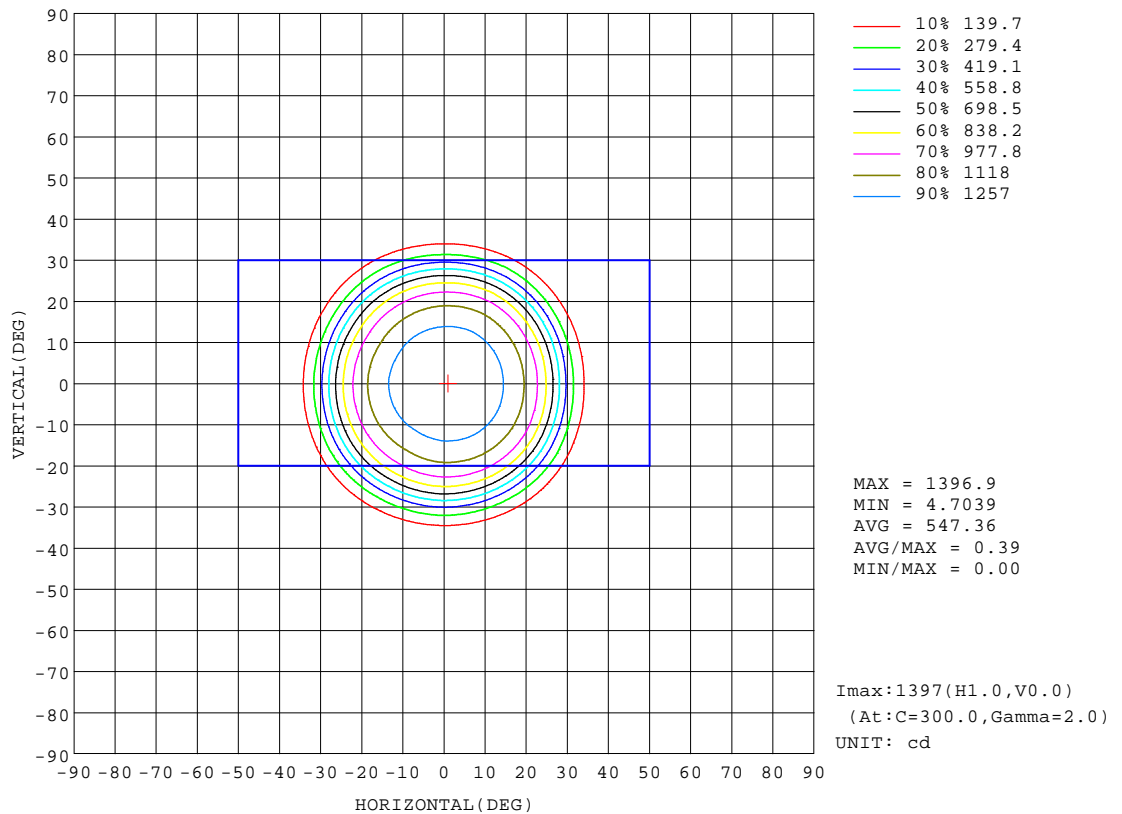
REFLECTANCE										
Ceiling	0.8	0.8	0.8	0.7	0.7	0.7	0.5	0.5	0.5	0
Walls	0.7	0.5	0.3	0.7	0.5	0.3	0.7	0.5	0.3	0
Working plane	0.2	0.2	0.2	0.2	0.2	0.2	0.2	0.2	0.2	0
ROOM INDEX	UTILIZATION FACTORS(PERCENT) $k(RI) \times RCR = 5$									
k = 0.60	53	50	47	53	49	47	52	49	47	45
0.80	57	54	52	57	54	52	56	53	52	50
1.00	59	56	54	59	56	54	58	56	54	52
1.25	62	59	57	61	58	57	60	58	56	54
1.50	63	60	59	62	60	58	61	59	58	55
2.00	64	62	60	64	61	60	62	60	59	56
2.50	65	63	62	64	62	61	63	61	60	57
3.00	66	64	63	65	63	62	63	62	61	57
4.00	67	66	65	66	65	64	64	63	62	58
5.00	68	67	66	67	66	65	64	64	63	59
ROOM INDEX	UF(total)									Direct
According to DIN EN 13032-2 2004			Suspended					SHRNOM = 1.25		

C Range: 0 - 360DEG
C Interval: 30.0DEG
Test Speed: HIGH
Temperature:25.3℃
Operators:zoe
Test Date:2025-1-10

Range: 0 - 180DEG
Interval: 1.0DEG
Test System:EVERFINE GO-SPEX500_V1 SYSTEM V2.00.461
Humidity:65.0%
Test Distance:3.160m [K=1.0000]
Remarks: LAMP:BXRE-30H1000-A-83 Ra:95
LENS:PM-1100 55R
NOT DRIVER:48V
30minutes warm-up

ISOCANDELA DIAGRAM

Test:U:47.997V I:0.3032A P:14.553W PF:1.0000 Freq:0Hz Lamp Flux:1597.4lx1 lm		
NAME: OZ48-SBZ-64	TYPE:	WEIGHT:
SPEC.: 3000K	DIM.:	SERIAL No.: 2501100051
MFR.: RISE	SUR.: 0.00246176m2	Shielding Angle:

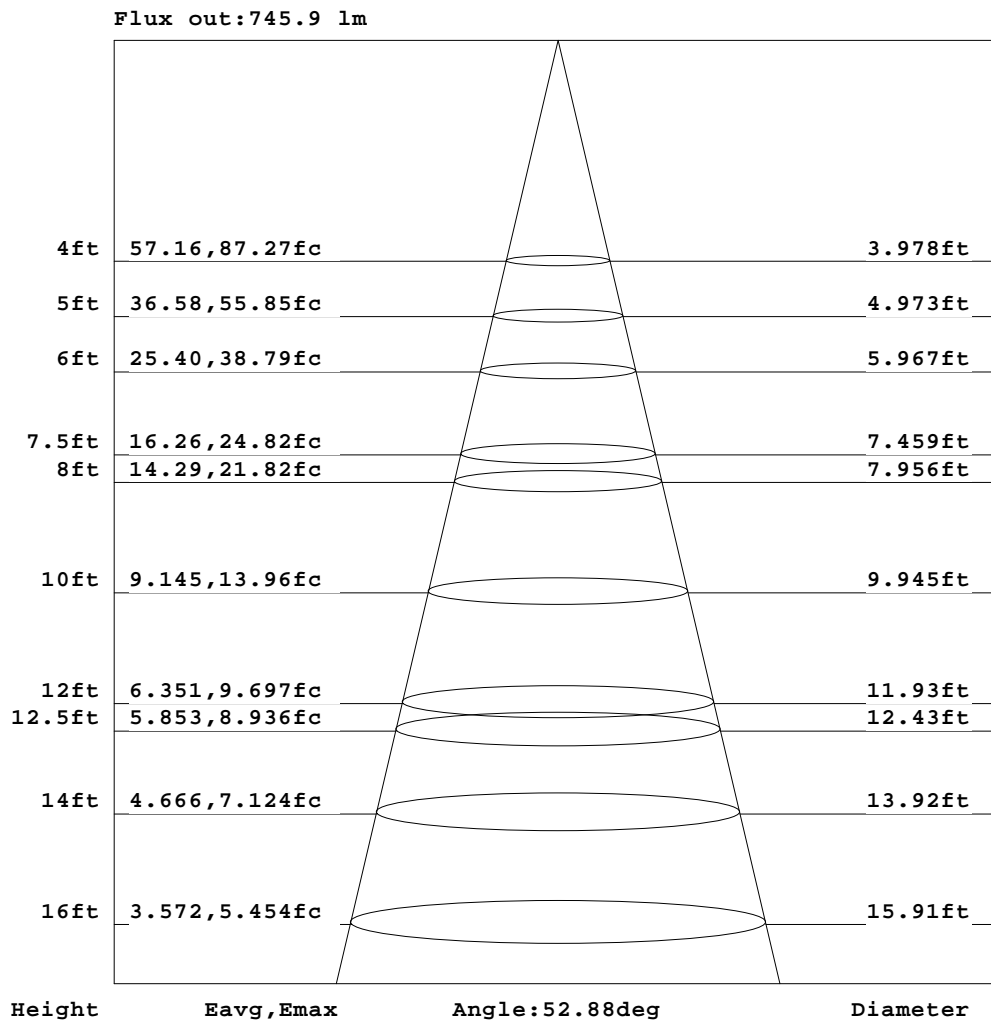


C Range: 0 - 360DEG
C Interval: 30.0DEG
Test Speed: HIGH
Temperature:25.3℃
Operators:zoe
Test Date:2025-1-10

Range: 0 - 180DEG
Interval: 1.0DEG
Test System:EVERFINE GO-SPEX500_V1 SYSTEM V2.00.461
Humidity:65.0%
Test Distance:3.160m [K=1.0000]
Remarks: LAMP:BXRE-30H1000-A-83 Ra:95
LENS:PM-1100 55R
NOT DRIVER:48V
30minutes warm-up

AAI Figure

Test:U:47.997V I:0.3032A P:14.553W PF:1.0000 Freq:0Hz Lamp Flux:1597.4lx1 lm		
NAME: OZ48-SBZ-64	TYPE:	WEIGHT:
SPEC.: 3000K	DIM.:	SERIAL No.: 2501100051
MFR.: RISE	SUR.: 0.00246176m2	Shielding Angle:



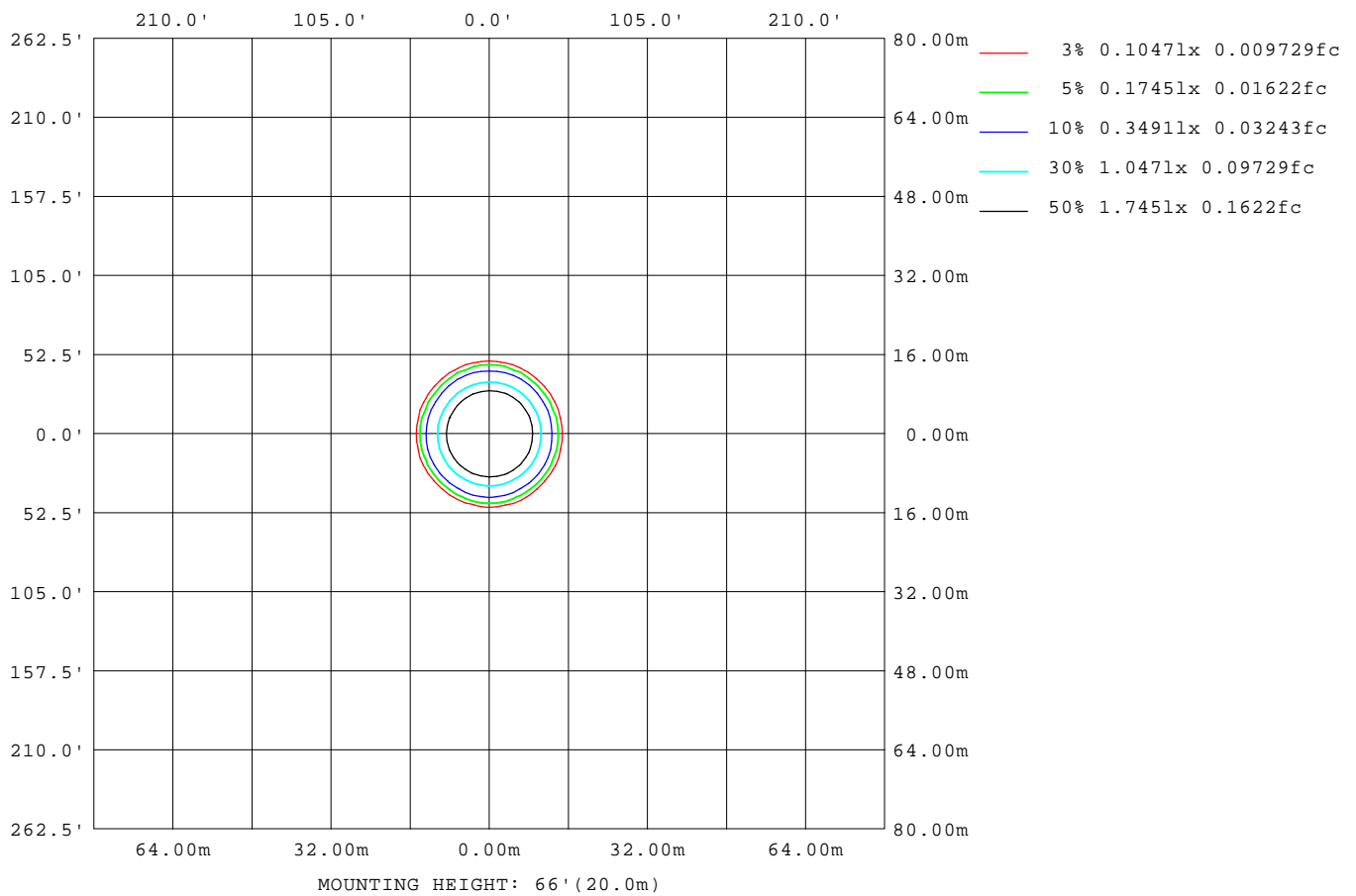
Note: The Curves indicate the illuminated area and the average illumination when the luminaire is at different distance.

C Range: 0 - 360DEG
C Interval: 30.0DEG
Test Speed: HIGH
Temperature: 25.3°C
Operators: zoe
Test Date: 2025-1-10

Range: 0 - 180DEG
Interval: 1.0DEG
Test System: EVERFINE GO-SPEX500_V1 SYSTEM V2.00.461
Humidity: 65.0%
Test Distance: 3.160m [K=1.0000]
Remarks: LAMP: BXRE-30H1000-A-83 Ra: 95
LENS: PM-1100 55R
NOT DRIVER: 48V
30minutes warm-up

ISOLUX DIAGRAM

Test:U:47.997V I:0.3032A P:14.553W PF:1.0000 Freq:0Hz Lamp Flux:1597.4lx1 lm		
NAME: OZ48-SBZ-64	TYPE:	WEIGHT:
SPEC.: 3000K	DIM.:	SERIAL No.: 2501100051
MFR.: RISE	SUR.: 0.00246176m2	Shielding Angle:



C Range: 0 - 360DEG
C Interval: 30.0DEG
Test Speed: HIGH
Temperature:25.3 °C
Operators:zoe
Test Date:2025-1-10

Range: 0 - 180DEG
Interval: 1.0DEG
Test System:EVERFINE GO-SPEX500_V1 SYSTEM V2.00.461
Humidity:65.0%
Test Distance:3.160m [K=1.0000]
Remarks: LAMP:BXRE-30H1000-A-83 Ra:95
LENS:PM-1100 55R
NOT DRIVER:48V
30minutes warm-up

LED Avg.L Report

Test:U:47.997V I:0.3032A P:14.553W PF:1.0000 Freq:0Hz Lamp Flux:1597.41x1 lm		
NAME: OZ48-SBZ-64	TYPE:	WEIGHT:
SPEC.: 3000K	DIM.:	SERIAL No.: 2501100051
MFR.: RISE	SUR.: 0.00246176m2	Shielding Angle:

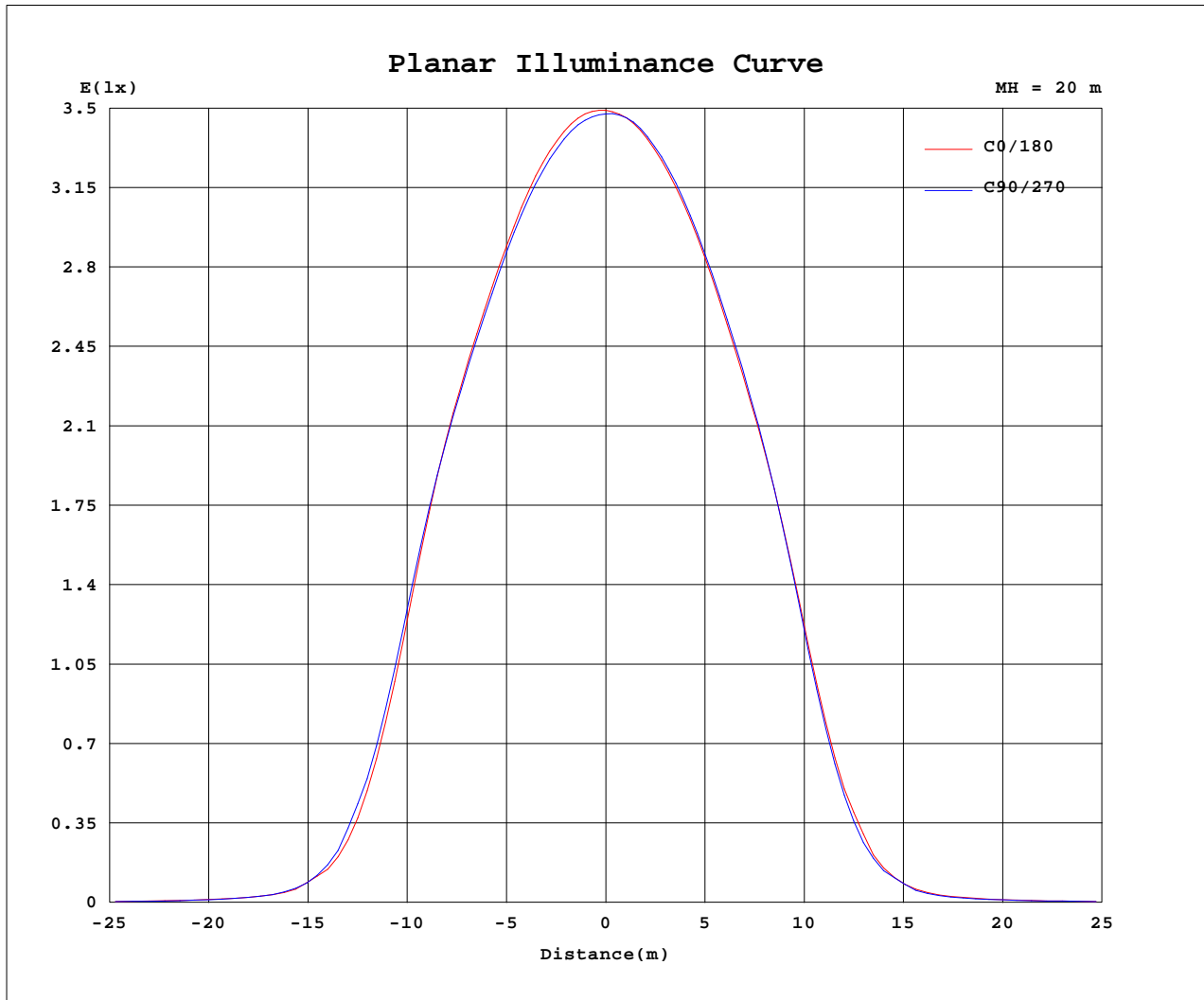
AvgL	cd/m2
L_0~180(65)av	2615
L_0~180(75)av	2790
L_0~180(85)av	6074
L_90~270(65)av	2683
L_90~270(75)av	2836
L_90~270(85)av	5927
L_45(65)av	2658
L_45(75)av	2820
L_45(85)av	5979

Standard: GB/T 29293-2012

C Range: 0 - 360DEG
C Interval: 30.0DEG
Test Speed: HIGH
Temperature:25.3℃
Operators:zoe
Test Date:2025-1-10

Range: 0 - 180DEG
Interval: 1.0DEG
Test System:EVERFINE GO-SPEX500_V1 SYSTEM V2.00.461
Humidity:65.0%
Test Distance:3.160m [K=1.0000]
Remarks: LAMP:BXRE-30H1000-A-83 Ra:95
LENS:PM-1100 55R
NOT DRIVER:48V
30minutes warm-up

Planar Illuminance Curve



C Range: 0 - 360DEG
 C Interval: 30.0DEG
 Test Speed: HIGH
 Temperature: 25.3 °C
 Operators: zoe
 Test Date: 2025-1-10

Range: 0 - 180DEG
 Interval: 1.0DEG
 Test System: EVERFINE GO-SPEX500_V1 SYSTEM V2.00.461
 Humidity: 65.0%
 Test Distance: 3.160m [K=1.0000]
 Remarks: LAMP: BXRE-30H1000-A-83 Ra: 95
 LENS: PM-1100 55R
 NOT DRIVER: 48V
 30minutes warm-up



LUMINOUS DISTRIBUTION INTENSITY DATA

Test:U:47.997V I:0.3032A P:14.553W PF:1.0000 Freq:0Hz Lamp Flux:1597.4lx1 lm		
NAME: OZ48-SBZ-64	TYPE:	WEIGHT:
SPEC.: 3000K	DIM.:	SERIAL No.: 2501100051
MFR.: RISE	SUR.: 0.00246176m2	Shielding Angle:

Table--1

UNIT: cd

C(DEG) (DEG)	0	30	60	90	120	150	180	210	240	270	300	330						
0	1392	1392	1392	1392	1392	1392	1392	1392	1392	1392	1392	1392						
5	1384	1385	1381	1377	1374	1374	1373	1374	1377	1383	1388	1387						
10	1337	1339	1334	1328	1320	1320	1316	1314	1321	1330	1340	1341						
15	1242	1246	1242	1235	1222	1223	1218	1210	1217	1231	1245	1246						
20	1096	1106	1101	1093	1072	1073	1065	1053	1061	1078	1099	1099						
25	824	849	846	844	820	816	803	779	789	801	830	826						
30	389	420	418	426	406	406	392	368	374	376	398	391						
35	107	119	119	122	114	115	111	102	104	103	108	105						
40	31.3	33.4	32.3	32.1	30.3	31.2	30.3	28.9	28.8	27.9	28.1	28.2						
45	15.9	16.5	15.6	14.7	14.5	15.1	14.7	14.4	14.2	13.9	13.6	13.9						
50	9.37	9.71	9.26	8.41	8.60	9.06	8.67	8.75	8.70	8.63	8.32	8.63						
55	5.52	5.79	5.48	5.10	5.29	5.62	5.27	5.27	5.42	5.41	5.29	5.28						
60	3.49	3.59	3.39	3.32	3.51	3.60	3.40	3.39	3.53	3.67	3.55	3.36						
65	2.74	2.79	2.63	2.60	2.74	2.84	2.70	2.73	2.87	2.99	2.85	2.67						
70	2.27	2.30	2.14	2.13	2.23	2.34	2.23	2.27	2.42	2.53	2.37	2.24						
75	1.75	1.76	1.71	1.66	1.69	1.77	1.80	1.83	1.88	1.95	1.93	1.81						
80	1.52	1.47	1.41	1.39	1.39	1.43	1.48	1.53	1.57	1.59	1.58	1.56						
85	1.35	1.31	1.23	1.20	1.19	1.23	1.25	1.28	1.31	1.34	1.35	1.36						
90	0.00	0.00	0.00	0.00	0.00	0.00	0.00	0.00	0.00	0.00	0.00	0.00						
95	0.00	0.00	0.00	0.00	0.00	0.00	0.00	0.00	0.00	0.00	0.00	0.00						
100	0.00	0.00	0.00	0.00	0.00	0.00	0.00	0.00	0.00	0.00	0.00	0.00						
105	0.00	0.00	0.00	0.00	0.00	0.00	0.00	0.00	0.00	0.00	0.00	0.00						
110	0.00	0.00	0.00	0.00	0.00	0.00	0.00	0.00	0.00	0.00	0.00	0.00						
115	0.00	0.00	0.00	0.00	0.00	0.00	0.00	0.00	0.00	0.00	0.00	0.00						
120	0.00	0.00	0.00	0.00	0.00	0.00	0.00	0.00	0.00	0.00	0.00	0.00						
125	0.00	0.00	0.00	0.00	0.00	0.00	0.00	0.00	0.00	0.00	0.00	0.00						
130	0.00	0.00	0.00	0.00	0.00	0.00	0.00	0.00	0.00	0.00	0.00	0.00						
135	0.00	0.00	0.00	0.00	0.00	0.00	0.00	0.00	0.00	0.00	0.00	0.00						
140	0.00	0.00	0.00	0.00	0.00	0.00	0.00	0.00	0.00	0.00	0.00	0.00						
145	0.00	0.00	0.00	0.00	0.00	0.00	0.00	0.00	0.00	0.00	0.00	0.00						
150	0.00	0.00	0.00	0.00	0.00	0.00	0.00	0.00	0.00	0.00	0.00	0.00						
155	0.00	0.00	0.00	0.00	0.00	0.00	0.00	0.00	0.00	0.00	0.00	0.00						
160	0.00	0.00	0.00	0.00	0.00	0.00	0.00	0.00	0.00	0.00	0.00	0.00						
165	0.00	0.00	0.00	0.00	0.00	0.00	0.00	0.00	0.00	0.00	0.00	0.00						
170	0.00	0.00	0.00	0.00	0.00	0.00	0.00	0.00	0.00	0.00	0.00	0.00						
175	0.00	0.00	0.00	0.00	0.00	0.00	0.00	0.00	0.00	0.00	0.00	0.00						
180	0.00	0.00	0.00	0.00	0.00	0.00	0.00	0.00	0.00	0.00	0.00	0.00						

C Range: 0 - 360DEG
C Interval: 30.0DEG
Test Speed: HIGH
Temperature:25.3℃
Operators:zoe
Test Date:2025-1-10

Range: 0 - 180DEG
Interval: 1.0DEG
Test System:EVERFINE GO-SPEX500_V1 SYSTEM V2.00.461
Humidity:65.0%
Test Distance:3.160m [K=1.0000]
Remarks: LAMP:BXRE-30H1000-A-83 Ra:95
LENS:PM-1100 55R
NOT DRIVER:48V
30minutes warm-up